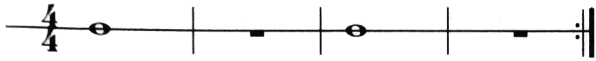


# RHYTHM STUDIES

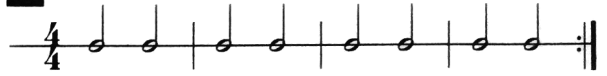
## LEVEL 1

$\frac{4}{4}$  or C

1



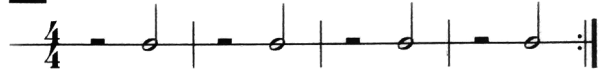
2



3



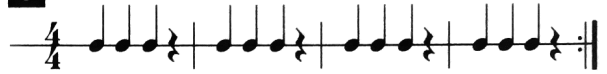
4



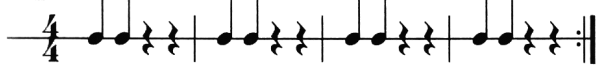
5



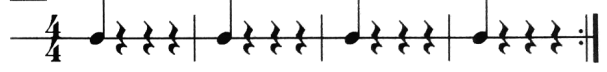
6



7



8



9



10



11



12



13



14



15



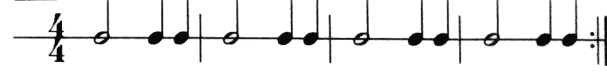
16



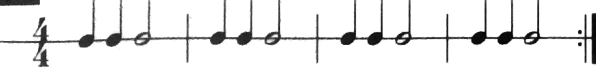
17



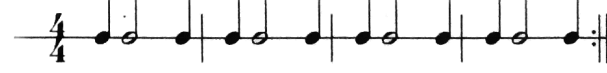
18



19



20



# RHYTHM STUDIES

## LEVEL 2

21



22



23



24



25



26



27



28



29



30



31



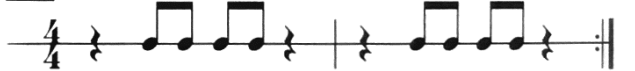
32



33



34



35



36



37



38



39




40




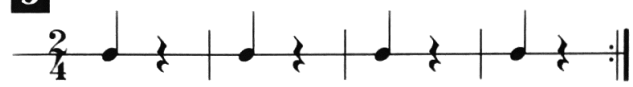
# RHYTHM STUDIES


## LEVEL 3


$\frac{2}{4}$


**1** 


**2** 


**3** 

**4** 

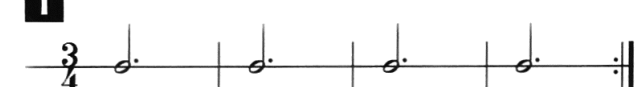
**5** 


**6** 


**7** 

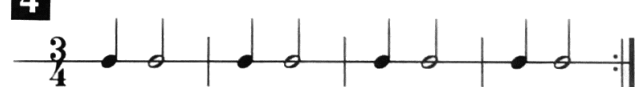
**8** 


$\frac{3}{4}$

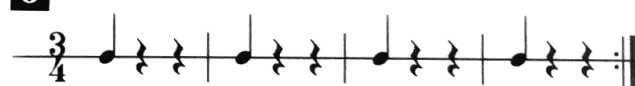
**1** 


**2** 


**3** 


**4** 


**5** 

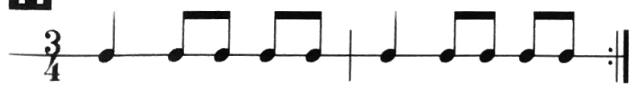
**6** 


**7** 

**8** 

**9** 

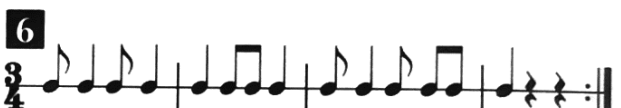
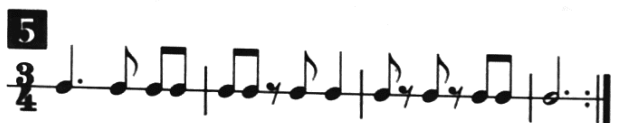
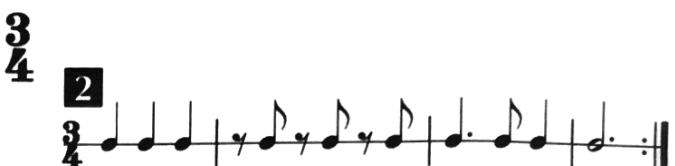
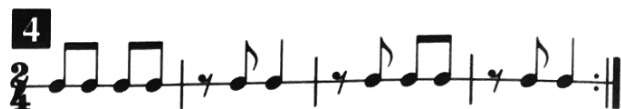
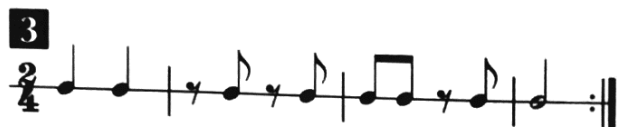
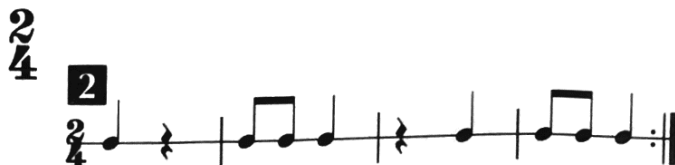
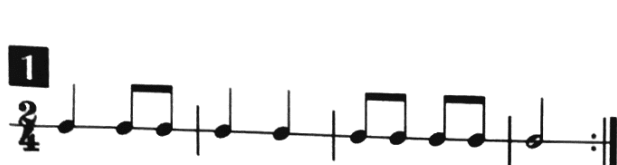
**10** 

**11** 

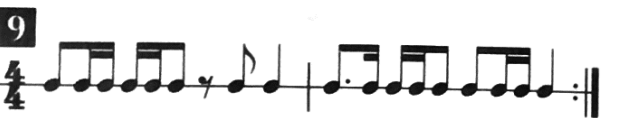
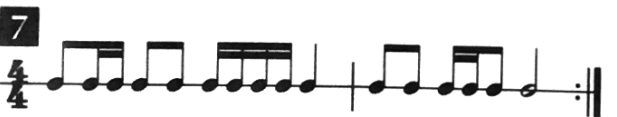
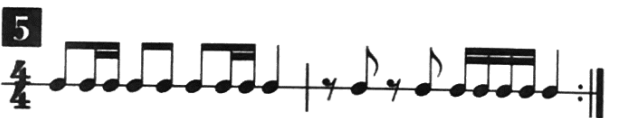
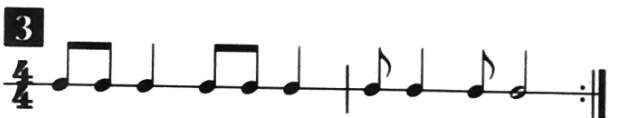
**12** 

# RHYTHM STUDIES

## LEVEL 4



4/4 or C




¢

[illegible][illegible][illegible][illegible]

38

2

[illegible]

68


2

Exercise 2: A single staff with a treble clef. The melody consists of: G4 (quarter), A4 (quarter), B4 (quarter), C5 (quarter), B4-A4 (beamed eighth notes), G4 (quarter), F#4 (quarter), E4 (quarter), D4 (half). The piece ends with a repeat sign.

4



6



8



## LEVEL 6

**1**  $\frac{2}{4}$

**3**  $\frac{2}{4}$

**5**  $\frac{2}{4}$

**7**  $\frac{2}{4}$

**2**  $\frac{2}{4}$

**4**  $\frac{2}{4}$

**6**  $\frac{2}{4}$

**8**  $\frac{2}{4}$

**1**  $\frac{3}{4}$

**3**  $\frac{3}{4}$

**5**  $\frac{3}{4}$

**7**  $\frac{3}{4}$

**9**  $\frac{3}{4}$

**2**  $\frac{3}{4}$

**4**  $\frac{3}{4}$

**6**  $\frac{3}{4}$

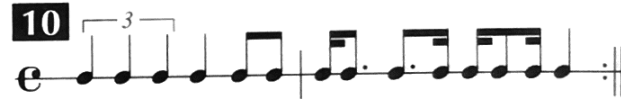
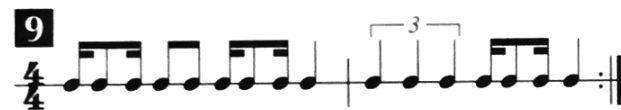
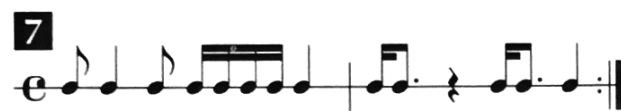
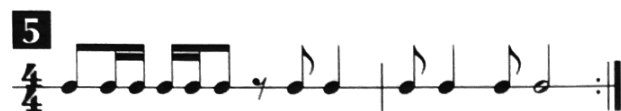
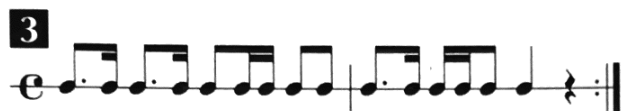
**8**  $\frac{3}{4}$

**10**  $\frac{3}{4}$

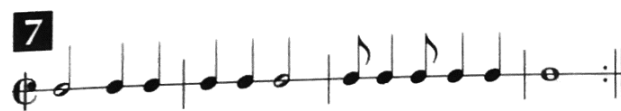
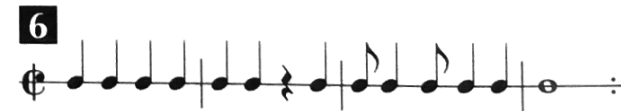
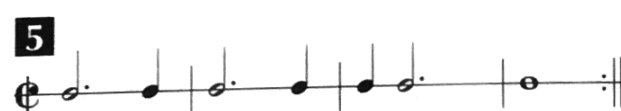
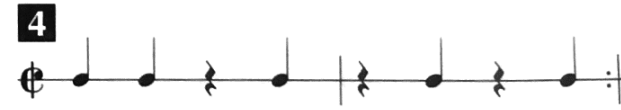
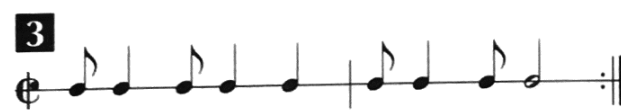
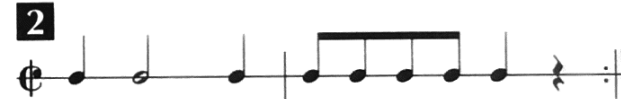
# RHYTHM STUDIES

## LEVEL 7

$\frac{4}{4}$  or C





C



# RHYTHM STUDIES

## LEVEL 8

$\frac{5}{4}, \frac{6}{4}$

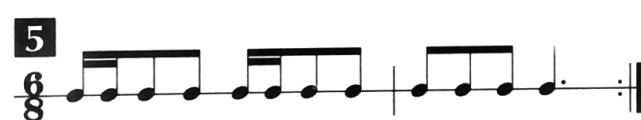

**1**  $\frac{5}{4}$   **2**  $\frac{5}{4}$  

**3**  $\frac{6}{4}$   **4**  $\frac{6}{4}$  



$\frac{6}{8}, \frac{9}{8}, \frac{12}{8}$

**1**  $\frac{6}{8}$   **2**  $\frac{6}{8}$  

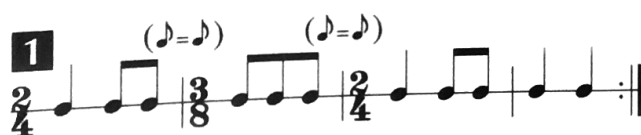

**3**  $\frac{6}{8}$   **4**  $\frac{6}{8}$  


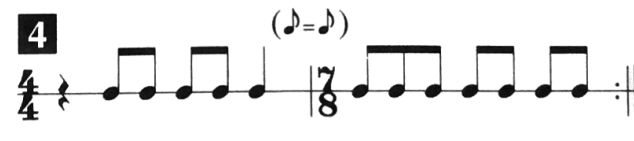
**5**  $\frac{6}{8}$   **6**  $\frac{6}{8}$  

**7**  $\frac{6}{8}$   **8**  $\frac{6}{8}$  

**9**  $\frac{9}{8}$   **10**  $\frac{12}{8}$  

$\frac{3}{8}, \frac{5}{8}, \frac{7}{8}$

**1**  $\frac{2}{4}$   **2**  $\frac{2}{4}$  

**3**  $\frac{3}{4}$   **4**  $\frac{4}{4}$  



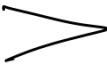
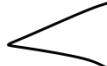
## Time Signatures / Meter

$\frac{4}{4}$	4 quarter notes conducted per bar
C	Common Time: Same as 4/4
$\frac{3}{4}$	3 quarter notes conducted per bar
$\frac{2}{4}$	2 quarter notes conducted per bar
$\frac{5}{4}$	5 quarter notes conducted per bar
$\frac{2}{2}$	2 half notes conducted per bar
¢	Cut Time: Same as 2/2
$\frac{6}{8}$	2 dotted-quarter notes conducted per bar
$\frac{12}{8}$	4 dotted-quarter notes conducted per bar

## Dynamics - "Volume"

<i>ff</i>	fortissimo
<i>f</i>	forte
<i>mf</i>	mezzo forte
<i>mp</i>	mezzo piano
<i>p</i>	piano
<i>pp</i>	pianissimo

## Changes in dynamics, tempo, or style

<i>rit</i>	ritardando
<i>ral</i>	ralentando
<i>accel</i>	accelerando
<i>dim</i>	diminuendo
	decrescendo -or- diminuendo
<i>cresc</i>	crescendo
	crescendo
<i>poco</i>	little
<i>poco a poco</i>	"little by little"
<i>subito</i>	instantly
<i>piu</i>	more
<i>molto</i>	very / a lot

Locating note names on the staff:

### LINES



### SPACES



Locating note names on the staff:

### LINES







### SPACES



















## Elements of Music - "The Grid"

Tone	Blend
Dynamics	Balance
Pitch	Intonation
Rhythm	Articulation
Pulse	

Articulations "Tonguing"	Long ("Connected")	Short ("Detached")
Dynamic (As written)	 <p>Tenuto ("Doo" in jazz)</p>	 <p>Staccato ("Dit" in jazz)</p>
Emphasized (Stronger than written)	 <p>Accent ("Dah" in jazz)</p>	 <p>Marcato ("Daht" in jazz)</p>

## Rhythmic Values

Number of Beats	Name	Note	Rest
4	Whole Note		
3	Dotted Half Note		
2	Half Note		
1.5	Dotted Quarter Note		
1	Quarter Note		
1/2	Eighth Note (Singles or groups)		
1/4	Sixteenth Note (Singles or groups)		
3/4	Dotted Eighth Note		

## Transposition

Concert	B $\flat$	E $\flat$	F
Same	Up 2	Down 3	Down 5

## Enharmonics

A
G $\sharp$ /A $\flat$
G
G $\flat$ /F $\sharp$
F
E
E $\flat$ /D $\sharp$
D
D $\flat$ /C $\sharp$
C
B
B $\flat$ /A $\sharp$
A
A $\flat$ /G $\sharp$
G